



ND

# BlueAlliance CARE+

## 2022 PROGRAM SUPPLEMENT

*Please refer to the BlueAlliance 2022 Program Guide for more specific details on Quality Measure specifications & for items that are consistent between the two programs.*

*If you have questions on the BlueAlliance Care+ program, please reach out to your provider partner or [BlueAlliance@bcbsnd.com](mailto:BlueAlliance@bcbsnd.com).*

BlueAlliance Care+ is a value-based program for Medicaid Expansion. This program aligns very closely with our commercial value-based program BlueAlliance.

BlueAlliance is a partnership between Blue Cross and Blue Shield of North Dakota (BCBSND) and North Dakota primary care providers focused on prevention of illness and better coordination of care for those with chronic disease. BlueAlliance represents a paradigm shift in care delivery, contracting and patient outcomes—a shift in which we all share the responsibility for improving the quality of care and reducing cost.

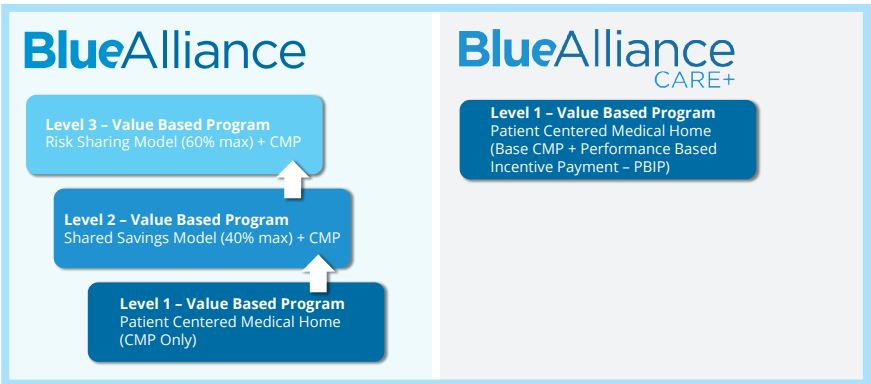
## BLUEALLIANCE CARE+ STRATEGY

*Alignment to BlueAlliance*

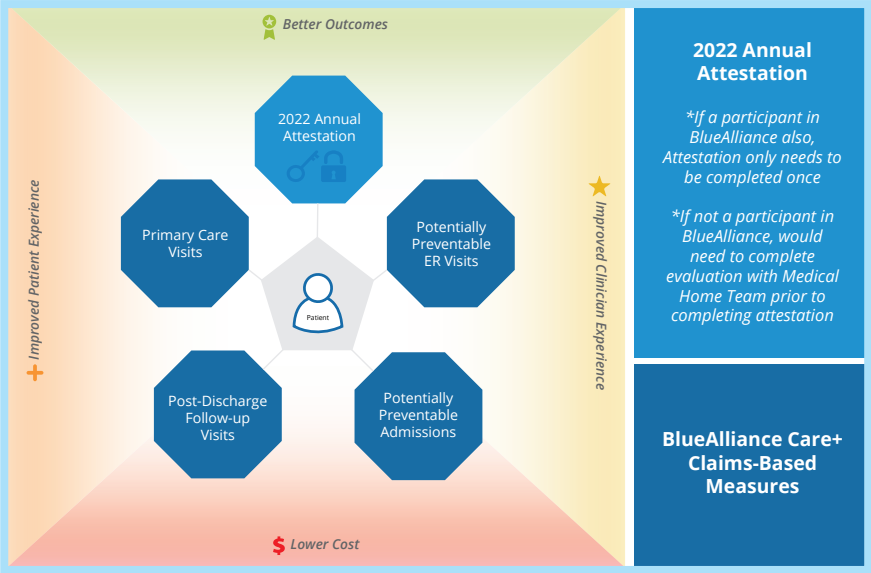
**Transforming health, community by community, through innovative programs.**

BCBSND’s goal is to design and implement value-based programs that support the provider community in our collective efforts to deliver a sustainable, meaningful, and reliable healthcare experience for our members.

## PROVIDER PARTICIPATION OPTIONS

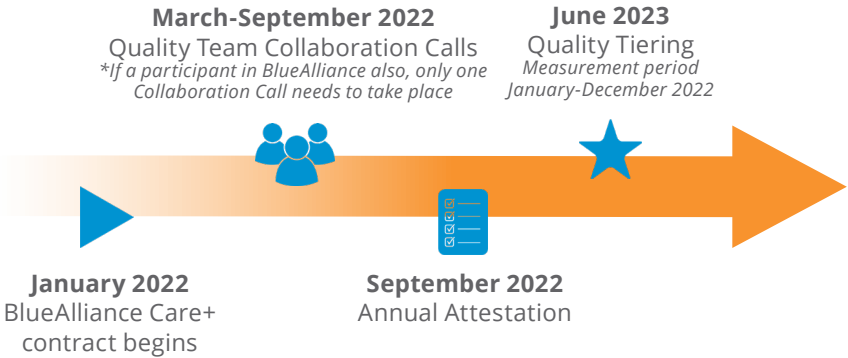


# QUALITY MEASURES



\*For more detailed information on the Claims-based Measure specifications, refer to the 2022 BlueAlliance Program Guide

## TIMELINE



# KEY COMPONENTS

KEY COMPONENTS		BlueAlliance 2022 (Commercial Members)	BlueAlliance Care+ (Medical Expansion Members)
Quality Measures	Attestation Process	✓	✓
	Breast Cancer Screening	✓	
	Child & Adolescent Well Care Visit	Shadow Measure	
	Colorectal Cancer Screening	Shadow Measure	
	Potentially Preventable Admissions	✓	✓
	Potentially Preventable ER Visit	✓	✓
	Post-Discharge Follow-up Visits	✓	✓
	Primary Care Visits	✓	✓
	Well Child Visits 0-15 & 15-30 Months	✓	
Attribution		Retrospective monthly attribution	Retrospective monthly attribution + assignment for non-users
Member Months		12 minimum member months for quality	10 minimum member months for quality
Claims Runout		3 months	2 months
Contract Term		2020 - 2022	2022 only
Payment		CMP monthly based on risk and quality performance	Flat CMP monthly payment Performance Based Incentive Payment (PBIP) based on quality performance

